

Two new species of the mealybug genus *Paracoccus* from Jiangxi, South China (Hemiptera, Coccoomorpha, Pseudococcidae)

Jiang-tao Zhang^{1,2}, Chao-qun Li^{1,2}, Xing-ping Liu^{1,2}, Yan Wang^{1,2}

¹ Key Laboratory of National Forestry and Grassland Administration on Forest Ecosystem Protection and Restoration of Poyang Lake Watershed, College of Forestry, Jiangxi Agricultural University, Nanchang, 330045, China

² College of Forestry, Jiangxi Agricultural University, Nanchang, 330045, China

Corresponding author: Jiang-tao Zhang (jiang_tao_zhang@163.com)

Abstract

Two new mealybug species, *Paracoccus gillianwatsonae* Zhang, **sp. nov.** and *P. wui* Zhang, **sp. nov.**, collected from Jiangxi, South China, are described and illustrated based on the morphology of adult females. *Paracoccus gillianwatsonae* is similar to *P. burnerae* (Brain, 1915), but it differs in having fewer pairs of cerarii, and in lacking both ventral oral collar tubular ducts on the margins of the head and translucent pores on the hind femur. *Paracoccus wui* resembles *P. keralae* Williams, 2004 and *P. neocarens* (Lit, 1992), but it differs in lacking ventral oral collar tubular ducts on the margins of the head and in having multilocular disc-pores usually in double rows at the posterior edges of abdominal segments V and VI. A key to the *Paracoccus* species found in China is provided.

Key words: *Dalbergia hupeana*, key, *Pinus massoniana*, Sternorrhyncha, taxonomy



Academic editor: Takumasa Kondo

Received: 14 January 2024

Accepted: 27 February 2024

Published: 3 April 2024

ZooBank: <https://zoobank.org/A40A2566-3C7F-49CE-8F9A-780874DDB782>

Citation: Zhang J-t, Li C-q, Liu X-p, Wang Y (2024) Two new species of the mealybug genus *Paracoccus* from Jiangxi, South China (Hemiptera, Coccoomorpha, Pseudococcidae). ZooKeys 1197: 1–11. <https://doi.org/10.3897/zookeys.1197.118778>

Copyright: © Jiang-tao Zhang et al. This is an open access article distributed under terms of the Creative Commons Attribution License ([Attribution 4.0 International – CC BY 4.0](https://creativecommons.org/licenses/by/4.0/)).

Introduction

Members of the family Pseudococcidae (commonly known as mealybugs) are small sap-sucking insects. The Pseudococcidae is the second-largest family of scale insects, with about 2047 described species in 261 genera worldwide (García Morales et al. 2016). The mealybug genus *Paracoccus* was established by Ezzat and McConnell (1956) with *Pseudococcus burnerae* Brain, 1915 designated as the type species. Currently, the genus includes 94 species (García Morales et al. 2016) and has a wide distribution in temperate and tropical parts of the world (Moghaddam and Esfandiari 2014). However, molecular phylogenetic analyses by Hardy et al. (2008) and Choi and Lee (2022) have indicated that *Paracoccus* is not monophyletic. Further molecular and morphological studies on this genus are greatly needed.

In China, Chen et al. (2011) first reported the invasive *Paracoccus marginatus* Williams & Granara de Willink, 1992 from Taiwan; later, this species was found in many places in mainland China, e.g. Fujian (Lin et al. 2019), Guangdong (Ahmed et al. 2015), Hainan (Wang et al. 2018), Jiangxi (Liao et al. 2021), and Yunnan (Wu et al. 2014; Zhang and Wu 2015). In addition, Miller et al. (2014)

reported that three *Paracoccus* species originating from China had been intercepted at U.S. ports of entry between 1995 and 2012: *P. burnerae*, *P. interceptus* Lit, 1997, and *P. marginatus*. Together with the two new species described herein, there are now five *Paracoccus* species reported from China.

In this study, *Paracoccus gillianwatsonae* and *P. wui*, both collected from Jiangxi, South China, are described and illustrated based on the morphology of adult females. A key to the species of *Paracoccus* reported from China is provided.

Materials and methods

Adult female specimens were slide-mounted using the method described by Borchsenius (1950). The morphological terminology used follows that of Williams (2004). Body measurements are given in millimeters (mm) and measurements of other structures are given in micrometers (μm). Each taxonomic illustration of the adult female is arranged in the usual way for Coccoomorpha, with features of the dorsum shown on the left side and those of the venter on the right. Enlargements of some important characters, not drawn to scale, are arranged around the main illustration. The letters and abbreviations used on the illustrations are explained in the legend below each illustration.

Slides of the new species are deposited in the College of Forestry, Jiangxi Agricultural University, Nanchang, China (CFJAU) and the Insect Collection of the Southwest Forestry University, Yunnan, China (SWFU). The slide labels are written in Chinese. Under 'Materials examined', the collection data of each holotype is listed with '/' indicating the positions of the line breaks on the labels.

Taxonomy

Genus *Paracoccus* Ezzat & McConnell, 1956

Paracoccus Ezzat and McConnell 1956: 37. Type species: *Pseudococcus burnerae* Brain, by original designation.

Gossypina Salazar 1972: 293. Type species: *Gossypina glauca* Salazar, by monotypy and original designation. Synonymized by Williams and Granara de Willink 1992: 292.

Diagnosis. (adapted and slightly modified from Williams 2004): body of adult female usually broadly oval. Anal lobes usually developed, each with a partial or complete ventral anal lobe bar extending from either apical seta or from bar seta. Antennae each normally 8-segmented. Legs well developed, claw without a denticle; tarsal digitules knobbed; translucent pores usually present on hind coxa and tibia. Cerarii numbering as many as 18 pairs, each cerarius bearing 2 conical setae, except some on head and thorax each with 3 or 4 setae; auxiliary setae usually absent except in anal lobe cerarii. Circulus present or absent. Anterior and posterior ostioles present. Anal ring normally with 6 setae. Oral rim tubular ducts present on dorsum and sometimes on venter. Oral collar tubular ducts present. Multilocular disc-pores present, at least on venter. Trilocular pores present.

***Paracoccus gillianwatsonae* Zhang, sp. nov.**

<https://zoobank.org/E9FB2EE0-028A-4C6A-96B0-D23596F5EC01>

Figs 1, 2

Materials examined. Holotype: 1 ♀ (mounted singly on a slide), CHINA, Jiangxi, Yichun City, Fengxin County, Chi'an Town [28°39'55"N, 115°21'9"E] / on the needles of *Pinus massoniana* Lamb. (Pinaceae) / 22.ix.2022, coll. Jiang-tao Zhang (CFJAU). **Paratypes:** 4 ♀♀ (mounted singly on 4 slides), same data as holotype (3 CFJAU, 1 SWFU).

Etymology. The species is named after Dr Gillian W. Watson (Department of Life Sciences, the Natural History Museum, London, U.K.), who has selflessly helped the first author.

Description. Live adult female (Fig. 1). Body elongate-oval, covered with thin, pale grey, mealy wax and with short, white lateral filaments around posterior body margins; these becoming successively longer on posteriormost four segments, with caudal filaments longest, each about 1/3 as long as maximum body width.

Slide-mounted adult female (Fig. 2, $n = 5$). Body elongate-oval, 1.4–1.8 mm long and 0.8–1.0 mm wide. Anal lobes moderately developed, dorsal surface of each lobe with a small, slightly sclerotized area; ventral surface with long apical seta, each 180–200 μm long, and anal lobe bar present forwards from apical seta. Antennae each usually with 8 segments, sometimes with segments IV and V combined; each antenna 322–360 μm long, length of segments (in μm): I 35.0–37.5, II 42.5–47.5, III 42.5–50.0, IV 25.0–30.0, V 22.5–30.0, VI 30.0–37.5, VII 35.0–40.0 and VIII 85.0–95.0. Eye spot located on body margin lateral to antennal base. Clypeolabral shield 150–163 μm long and 120–140 μm wide. Labium 130–148 μm long and 80–95 μm wide, 0.87–0.98 times as long as clypeolabral shield. Legs well developed; claw stout, without a denticle; both tarsal digitules and claw digitules apically knobbed, longer than claw; with translucent pores present on hind coxa and tibia (Fig. 2D, E). Hind leg measurements (in μm): coxa 55–65, trochanter + femur 227–245, tibia + tarsus 242–278, claw 20.0–22.5. Ratio of lengths of hind tibia + tarsus to trochanter + femur 1: 1.10–1.19, ratio of lengths of hind tibia to tarsus 1: 1.67–1.85. Circulus nearly quadrate, 50–75 μm long and 65–85 μm wide, situated between abdominal segments III and IV, divided by an intersegmental line. Anterior and posterior ostioles present, each lip with 7–12 trilocular pores and 0–4 setae. Anal ring 65–80 μm wide, bearing 6 long setae, each seta 112–130 μm long. Cerarii usually numbering 6 or 7 pairs on abdomen, sometimes also with 1 pair present on thorax and 1 pair present on head. Anal lobe cerarii (C_{18}) (Fig. 2H) each bearing 2 conical setae, each seta 15–17 μm long and 6–7 μm wide at base, with 1 or 2 auxiliary setae and 10–12 trilocular pores, all situated on a small slightly sclerotized area. Other cerarii each containing 2 conical setae and 3–5 trilocular pores. Cerarii C_{12} , if present, usually each containing only 1 conical seta and 1 short seta. Cerarii on thorax, if present, usually each containing 2 slender conical setae. On head, usually the ocular cerarii (C_3) present, each containing 3 or 4 slender setae. Discoidal pores (Fig. 2C), each narrower than a trilocular pore, scattered on dorsum and venter.

Dorsum. Setae (Fig. 2I) short, stiff, sometimes spine-like, mostly each 20.0–32.5 μm long, accompanied by shorter setae, each 7.5–15.0 μm long; setal



Figure 1. Live adult female of *Paracoccus gillianwatsonae* Zhang, sp. nov. on a needle of *Pinus massoniana* Lamb. (Pinaceae).

bases not closely associated with trilocular pores. Trilocular pores (Fig. 2B), each 3.0–3.5 μm wide, evenly distributed. Oral rim tubular ducts (Fig. 2J) present, numbering 11–24 in total, each duct 11–12 μm long and about 4 μm wide, with rim 8–9 μm in diameter, usually present singly near margins of head, thorax, and close to cerarii on posterior abdominal segments, and others usually present in medial or submedial areas of thorax and abdominal segments II and III, or only on abdominal segment II.

Venter. Setae relatively long and flagellate, longest setae present on medial area of head and posterior abdominal segments, each 62.5–125.0 μm long, accompanied by shorter setae, each 20.0–32.5 μm long. Cisanal setae each 50–55 μm long; obanal setae each 45–50 μm long. Trilocular pores similar to those on dorsum, evenly distributed. Multilocular disc-pores (Fig. 2G), each 7–8 μm in diameter, present around vulva in more-or-less single rows at posterior edges of abdominal segments IV–VII, and scattered or in rows at anterior edges of abdominal segments VI–VII, sometimes with 2 pores on abdominal segment III; also sparsely present on margins of posterior abdominal segments, and occasionally in submedial areas of thorax. Oral collar tubular ducts of 2 main sizes present: larger type (Fig. 2A), each 6–7 μm long and about 3.5 μm wide, present on medial areas of abdominal segments III–VII, in marginal groups on all abdominal segments and opposite each anterior coxa; and smaller type (Fig. 2F), each 5–6 μm long and 2.0–2.5 μm wide, present on medial areas of abdominal segments III–VII, also sparsely present in marginal areas together with large ducts, and occasionally present in medial areas of thorax.

Host plant. Pinaceae: *Pinus massoniana* Lamb.

Distribution. China (Jiangxi).

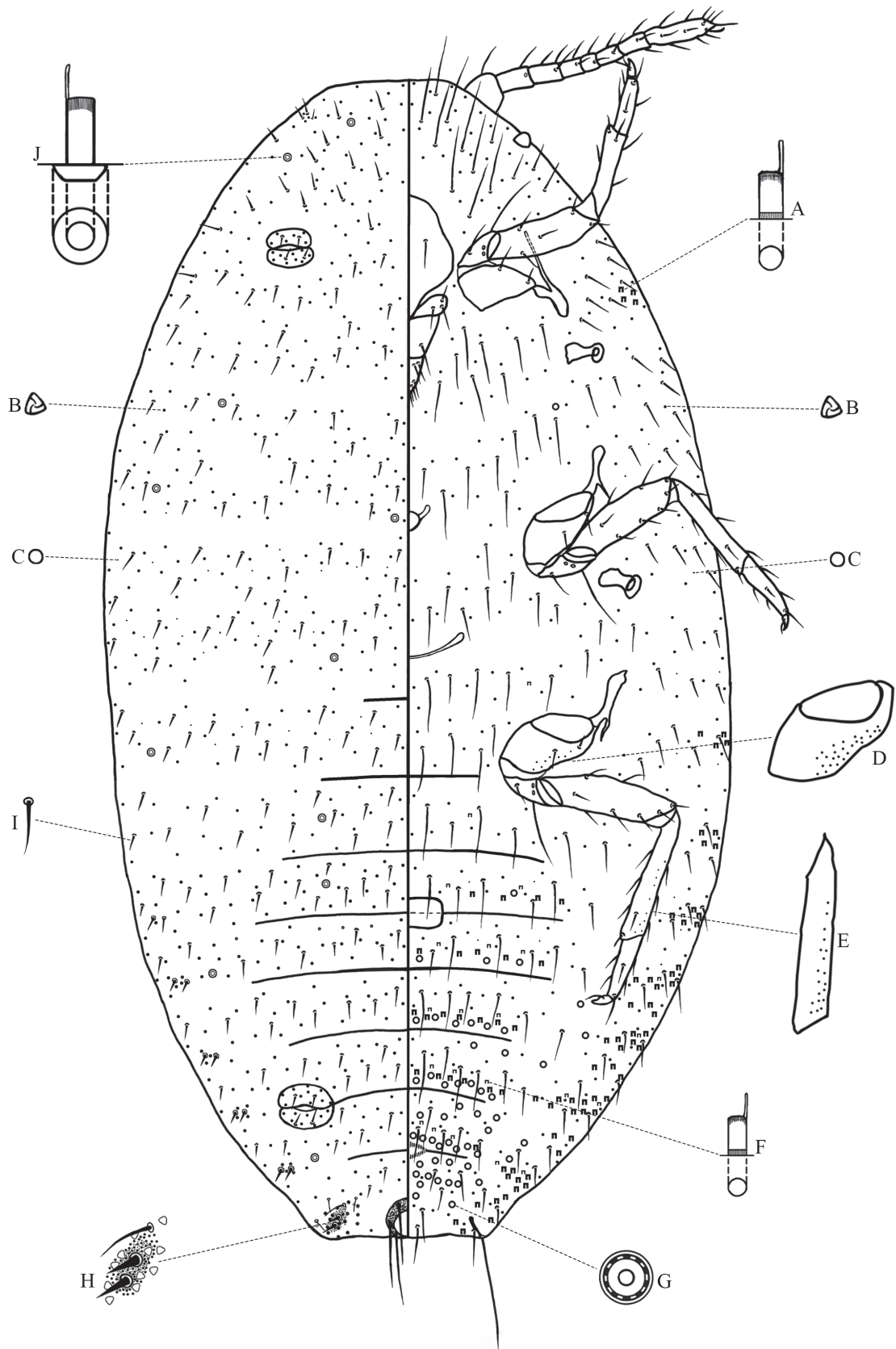


Figure 2. Adult female of *Paracoccus gillianwatsonae* Zhang, sp. nov. **A** large-type oral collar tubular duct **B** trilocular pore **C** discoidal pore **D** hind coxa **E** hind tibia **F** small-type oral collar tubular duct **G** multilocular disc-pore **H** anal lobe cerarius (C_{18}) **I** dorsal seta **J** oral rim tubular duct.

Remarks. *Paracoccus gillianwatsonae* sp. nov. is similar to *P. burnerae* (Brain, 1915) (morphological characteristics of *P. burnerae* based on the redescription and illustration by Williams (2004)) in having ventral multilocular disc-pores in single rows at the posterior edges of abdominal segments IV and V; it differs from the latter (character states of *P. burnerae* given in parentheses) by having: (i) ventral oral collar tubular ducts absent from margins of the head (present); (ii) cerarii numbering fewer than 18 pairs (18 pairs); and (iii) translucent pores absent from hind femur (present).

***Paracoccus wui* Zhang, sp. nov.**

<https://zoobank.org/150B72B5-4F10-4795-9FC4-C67A338FE302>

Figs 3, 4

Materials examined. Holotype: 1 ♀ (mounted singly on a slide), CHINA, Jiangxi, Lushan National Nature Reserve [29°33'N, 115°57'E] / under bark crack of *Dalbergia hupeana* Hance (Fabaceae) / 14.ix.2021, coll. Jiang-tao Zhang (CFJAU). **Paratypes:** 8 ♀♀ (mounted singly on 8 slides), same data as holotype (6 CFJAU, 2 SWFU).

Etymology. The species is named after Dr San-an Wu (Beijing Forestry University, Beijing, China), who has made important contributions to the study of Chinese scale insects and has selflessly helped the first author.

Description. Live adult female (Fig. 3). Body of mature adult female elongate-oval, covered with white, mealy wax; posterior of body with a short, white ovisac formed of tangled wax filaments.

Slide-mounted adult female (Fig. 4, $n = 5$). Body elongate-oval to broadly oval, 2.8–3.4 mm long and 1.9–2.5 mm wide. Anal lobes moderately developed, dorsal surface of each lobe with a small, slightly sclerotized area; ventral surface with long apical seta, each seta 225–240 μm long, and anal lobe bar present forwards from apical seta. Antennae each 355–458 μm long with 8 segments, length of segments (in μm): I 42.5–55.0, II 50.0–62.5, III 47.5–62.5, IV 25–35, V 27.5–50.0, VI 30.0–37.5, VII 37.5–50.0 and VIII 87.5–110.0. Eye spot located on body margin lateral to antennal base. Clypeolabral shield 163–213 μm long and 150–195 μm wide. Labium 178–225 μm long and 87.5–100.0 μm wide, 1.03–1.18 times as long as clypeolabral shield. Legs well developed; claw stout, without a denticle; both tarsal digitules and claw digitules apically knobbed, longer than claw; with translucent pores present on anterior and posterior surfaces of hind coxa (Fig. 4E) and on posterior surface of hind tibia (Fig. 4F). Hind leg measurements (in μm): coxa 80–113, trochanter + femur 275–378, tibia + tarsus 283–360, claw 27.5–32.5. Ratio of lengths of hind tibia + tarsus to trochanter + femur 1: 0.95–1.04, ratio of lengths of hind tibia to tarsus 1: 1.78–2.35. Circulus nearly quadrate, 115–145 μm long and 125–188 μm wide, situated between abdominal segments III and IV, divided by an intersegmental line. Anterior and posterior ostioles present, each lip with some trilocular pores and 1–5 setae. Anal ring 87.5–112.5 μm wide, bearing 6 long setae, each 120–145 μm long; occasionally 2 short setae present between long setae. Cerarii numbering 5–8 recognisable pairs on abdomen, sometimes also possibly 1–3 pairs discernible on thorax and head. Anal lobe cerarii (Fig. 4I) each containing 2 conical setae, each seta 16–20 μm long and 7–8 μm wide at base, 2–5 auxiliary setae and 22–26 trilocular pores, all situated on a small



Figure 3. Live adult female of *Paracoccus wui* Zhang, sp. nov. in bark crack of *Dalbergia hupeana* Hance (Fabaceae).

slightly sclerotized area. Anterior abdominal cerarii (Fig. 4J) each usually containing 2 smaller conical setae, 4–8 trilocular pores, and sometimes with small slightly sclerotized at setal bases; the setae in anterior abdominal cerarii sometimes widely spaced, or each reduced to only 1 conical seta, or replaced by 1 or 2 stout setae. Cerarii on thorax and head difficult to recognize because some marginal dorsal setae sometimes associated with 2–4 trilocular pores near setal bases, which can be confused with a cerarius; if cerarii present, each often with a pair of stout setae similar to those on dorsum, but recognisable as cerarius by a small concentration of trilocular pores, and sometimes the ocular cerarii (C_3) present, each with 3 or 4 slender setae. Discoidal pores (Fig. 4D) of varying sizes, with larger pores each usually wider than a trilocular pore (in one paratype most larger pores about same diameter as a trilocular pore and only a few pores wider than a trilocular pore), scattered on dorsum and venter.

Dorsum. Setae (Fig. 4K) stout with flagellate tips, sometimes bifurcate; larger setae, each 42.5–62.5 μm long and sometimes with 1 or 2 trilocular pores near setal base, and shorter setae, each 17.5–37.5 μm long. Trilocular pores (Fig. 4C), each 3–4 μm wide, evenly distributed. Multilocular disc-pores absent. Oral rim tubular ducts (Fig. 4L) very few, totaling 1–8 in available specimens, each about 9 μm long and 4–5 μm wide, with rim 8–9 μm in diameter, mainly present medially, submedially or submarginally on thorax and anterior abdominal segments, sometimes singly next to abdominal cerarii C_{11} , C_{15} and C_{17} , ducts usually absent from medially and submedially areas of abdominal segments IV–VIII. Oral collar tubular ducts usually absent from dorsum, occasionally 1 type of duct, similar to large type of oral collar tubular ducts on venter, singly present marginally or submarginally on thorax, or abdominal segment I, or abdominal segment IV.

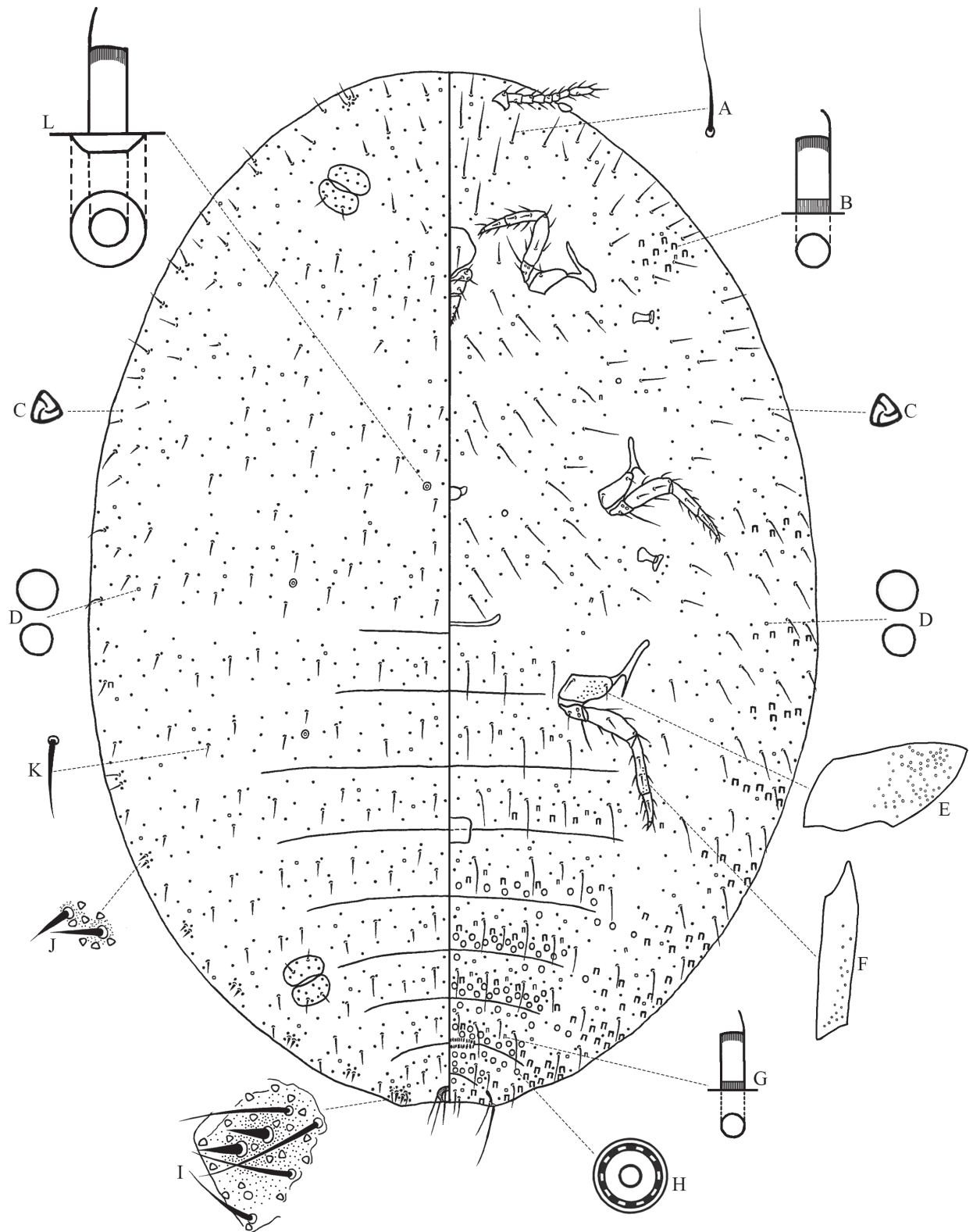


Figure 4. Adult female of *Paracoccus wui* Zhang, sp. nov. **A** ventral seta **B** large-type oral collar tubular duct **C** trilocular pore **D** discoidal pores **E** hind coxa **F** hind tibia **G** small-type oral collar tubular duct **H** multilocular disc-pore **I** anal lobe cerarius (C_{18}) **J** cerarius on abdomen **K** dorsal seta **L** oral rim tubular duct.

Venter. Setae (Fig. 4A) relatively long and flagellate, longest setae present on medial area of head and posterior abdominal segments, each 100–138 μm long, and shorter setae, each 30.0–62.5 μm long. Cisanal setae each 100–113 μm

long; obanal setae each 95–105 µm long. Trilocular pores similar to those on dorsum, evenly distributed. Multilocular disc-pores (Fig. 4H), each 7–8 µm in diameter, present around vulva, usually in double rows at posterior edges of abdominal segments V–VII, and in single or double rows at the posterior edge of abdominal segment IV; others distributed at anterior edges of abdominal segments V–VII; in addition, a few pores located on submargins of abdominal segments and sometimes also present on abdominal segment III; also scattered pores present on medial and submedial areas of thorax. Oral collar tubular ducts of 2 main sizes present: larger type (Fig. 4B), each about 8 µm long and 3.5–4.0 µm wide, present mainly on medial areas of abdominal segments III–VII, in marginal groups on thorax and abdomen, also opposite each anterior coxa; and smaller type (Fig. 4G), each about 6 µm long and 2.5–3.0 µm wide, present mainly on medial areas of abdominal segments II–VII, also sparsely present in marginal areas together with large ducts, and occasionally in medial areas of thorax.

Host plant. Fabaceae: *Dalbergia hupeana* Hance.

Distribution. China (Jiangxi).

Remarks. *Paracoccus wui* sp. nov. is similar to *P. keralae* Williams, 2004 in having only a few dorsal oral rim tubular ducts; it differs from the latter (character states of *P. keralae* given in parentheses) by having: (i) ventral oral collar tubular ducts absent from margins of the head (present); (ii) multilocular disc-pores usually in double rows at posterior edges of abdominal segments V and VI (in single rows); and (iii) larger discoidal pores usually each wider than a trilocular pore (narrower than a trilocular pore).

Paracoccus wui also resembles *P. neocarens* (Lit, 1992) (based on the redescription and illustration by Williams (2004)) in possessing some large discoidal pores and a reduced number of dorsal oral rim tubular ducts; it differs from the latter (character states of *P. neocarens* in parentheses) in having: (i) ventral oral collar tubular ducts absent from margins of the head (present between antennal bases); and (ii) multilocular disc-pores usually in double rows at posterior edges of abdominal segments V and VI (in single rows).

Key to adult females of *Paracoccus* known from China

- 1 Oral rim tubular ducts present on both dorsum and venter, near margins only ***P. marginatus* Williams & Granara de Willink**
- Oral rim tubular ducts present on dorsum only, with at least a few in submedian or median areas **2**
- 2 Ventral oral collar tubular ducts present on margins of the head ***P. burnerae* (Brain)**
- Ventral oral collar tubular ducts absent from margins of the head **3**
- 3 Abdominal segments IV and V with multilocular disc-pores present in single rows; labium shorter than clypeolabral shield ***P. gillianwatsonae* sp. nov.**
- Abdominal segments IV and V with multilocular disc-pores present usually in double rows; labium longer than clypeolabral shield **4**
- 4 Cerarii numbering 18 pairs; discoidal pores each narrower than a trilocular pore ***P. interceptus* Lit**
- Cerarii numbering fewer than 18 pairs; larger discoidal pores each usually wider than a trilocular pore ***P. wui* sp. nov.**

Acknowledgements

The first author is grateful to Dr San-an Wu (Beijing Forestry University, Beijing, China) and Dr Gillian W. Watson (Department of Life Sciences, the Natural History Museum, London, U.K.), for their help in species identification, reviewing earlier versions of the manuscript, and providing many valuable suggestions and comments.

Additional information

Conflict of interest

The authors have declared that no competing interests exist.

Ethical statement

No ethical statement was reported.

Funding

The project was supported by the National Natural Science Foundation of China (32000328).

Author contributions

Conceptualization: JZ. Data curation: JZ, CL. Writing – original draft: JZ. Writing – review and editing: JZ, XL, YW.

Author ORCIDs

Jiang-tao Zhang  <https://orcid.org/0000-0002-0007-3918>

Chao-qun Li  <https://orcid.org/0009-0004-5636-6906>

Xing-ping Liu  <https://orcid.org/0000-0003-1831-9290>

Yan Wang  <https://orcid.org/0009-0001-9347-6272>

Data availability

All of the data that support the findings of this study are available in the main text.

References

- Ahmed MZ, He RR, Wu MT, Gu YJ, Ren JM, Liang F, Li HL, Hu XN, Qiu BL, Mannion CM, Ma J (2015) First report of the papaya mealybug, *Paracoccus marginatus* (Hemiptera: Pseudococcidae), in China and genetic record for its recent invasion in Asia and Africa. *Florida Entomologist* 98(4): 1157–1162. <https://doi.org/10.1653/024.098.0420>
- Borchsenius NS (1950) Mealybugs and Scale Insects of USSR (Coccoidea). *Akademii Nauk SSSR, Zoological Institute, Moscow* 32: 1–250.
- Brain CK (1915) The Coccidae of South Africa. *Transactions of the Royal Society of South Africa*. Cape Town 5: 65–194. <https://doi.org/10.1080/00359191509519718>
- Chen SP, Wong JY, Wu WJ (2011) Preliminary report on the occurrence of papaya mealybug, *Paracoccus marginatus* Williams and Granara de Willink, in Taiwan. *Journal of Taiwan Agricultural Research* 60(1): 72–76. <https://doi.org/10.6156/jtar/2011.06001.07>
- Choi J, Lee S (2022) Higher classification of mealybugs (Hemiptera: Coccoomorpha) inferred from molecular phylogeny and their endosymbionts. *Systematic Entomology* 47(2): 1–17. <https://doi.org/10.1111/syen.12534>

- Ezzat YM, McConnell HS (1956) A classification of the mealybug tribe Planococcini (Pseudococcidae: Homoptera). Bulletin of the Maryland Agriculture Experiment Station A-84: 1–108.
- García Morales M, Denno BD, Miller DR, Miller GL, Ben-Dov Y, Hardy NB (2016) ScaleNet: a literature-based model of scale insect biology and systematics. Database. <http://scalenet.info> [Accessed 26 December 2023]
- Hardy NB, Gullan PJ, Hodgson CJ (2008) A subfamily-level classification of mealybugs (Hemiptera: Pseudococcidae) based on integrated molecular and morphological data. Systematic Entomology 33(1): 51–71. <https://doi.org/10.1111/j.1365-3113.2007.00408.x>
- Liao S, Liao WC, Li T, Lu HP, Wu M, Wang JG (2021) Invasive pest *Paracoccus marginatus* was first discovered in Jiangxi Province. Biological Disaster Science 44(1): 10–14.
- Lin LH, Zheng LZ, Shi MZ, Li JY, Wang QY, Li L, Fu JW, Wu MX (2019) A molecular detection and identification method for papaya mealybug (*Paracoccus marginatus*), the first recorded invasive pest in Fujian province of China. Journal of Fruit Science 36(9): 1130–1139.
- Lit IL (1992) A new genus and ten new species of Philippine mealybugs (Pseudococcidae, Coccoidea, Hemiptera). Philippine Entomologist 8: 1158–1181.
- Lit IL (1997) New records and additional notes on Philippine mealybugs (Pseudococcidae, Coccoidea, Hemiptera). Philippine Entomologist 11: 33–48.
- Miller D, Rung A, Parikh G, Venable G, Redford AJ, Evans GA, Gill RJ (2014) Identification tool for species of quarantine significance, 2nd edn. <http://idtools.org/scales/index.cfm> [Accessed 22 December 2023]
- Moghaddam M, Esfandiari M (2014) A new species of the genus *Paracoccus* (Hem.: Coccoomorpha: Pseudococcidae) from Iran. Journal of Entomological Society of Iran 34(3): 57–61.
- Salazar TJA (1972) Contribución al conocimiento de los Pseudococcidae del Perú. Revista Peruana de Entomología 15(2): 277–303.
- Wang YS, Zhou P, Tian H, Wan FH, Zhang GF (2018) First record of the invasive pest *Pseudococcus jackbeardsleyi* (Hemiptera: Pseudococcidae) on the Chinese mainland and its rapid identification based on species-specific polymerase chain reaction. Journal of Economic Entomology 111(5): 2120–2128. <https://doi.org/10.1093/jee/toy223>
- Williams DJ (2004) Mealybugs of southern Asia. The Natural History Museum, London. Southdene SDN. BHD., Kuala Lumpur, 896 pp.
- Williams DJ, Granara de Willink MC (1992) Mealybugs of Central and South America. C.A.B. International, Wallingford, 635 pp.
- Wu FZ, Liu ZH, Shen H, Yu F, Ma J, Hu XN, Zeng L (2014) Morphological and molecular identification of *Paracoccus marginatus* (Hemiptera: Pseudococcidae) in Yunnan, China. Florida Entomologist 97(4): 1469–1473. <https://doi.org/10.1653/024.097.0422>
- Zhang JT, Wu SA (2015) A new invasive mealybug, *Paracoccus marginatus* (Hemiptera: Coccoidea: Pseudococcidae), in mainland China. Journal of Environmental Entomology 37(2): 441–446.